

# Battle Abbey Sixth Form

ACADEMIC YEAR 25/26

**be challenged,  
be ambitious,  
be you.**

**Battle Abbey School**

Battle, East Sussex, TN33 0AD

**[battleabbeysschool.com](http://battleabbeysschool.com)**

[info@battleabbeysschool.com](mailto:info@battleabbeysschool.com)



# Battle Abbey Sixth Form

---



# Contents

04	Welcome
05	Sixth Form Student Voice
06	Courses
07	Art and Design
08	Fine Art
09	Photography
10	Textiles
12	Biology
13	BTEC Business
14	Chemistry
15	Classical Civilisation
16	Computer Science
17	Drama and Theatre
18	Economics
19	English Literature
20	Geography
21	History
22	French and Spanish
23	Latin
24	Maths and Further Maths
25	Music
26	BTEC PE
27	Physics
28	Psychology
29	Religious Studies
30	A Levels Plus
30	EPQ (Extended Project Qualification)
31	Enrichment Programme
31	Societies
31	Careers
32	The Gateway
32	Expectations
33	Sixth Form Life
34	UCAS Applications
35	Former Pupil Profiles
37	A Level Results

# Welcome to our Sixth Form



## Welcome to the Sixth Form at Battle Abbey School

*'What first attracted me to Battle Abbey School was the friendly, welcoming character of the school community. There's a real sense of staff, students and families all pulling in the same direction and this strong sense of community sees our pupils achieve highly. Sixth Form students are very quickly feel at home as everyone is welcoming and friendly. Our family ethos and values of Belonging, Aspiration and Service ensure that tolerance, discipline and dedication are corner stones of what it means to be a Battle Abbey student.*

*The Sixth Form experience at Battle Abbey School is as unique as the building itself. Students split their time between the Abbey and the School's dedicated Sixth Form Centre, Martlet House on Battle High Street. Most students take three or four A Levels and many also complete an EPQ (Extended Project Qualification, which is particularly valued by Universities for developing techniques such as public speaking and research).*

*As a parent myself I know how important it is for our children to feel happy, supported and, particularly at Sixth Form, be given the opportunity to grow and flourish. The expectation on Sixth Formers is high but comes with great reward.*

*Sixth Formers are expected to lead by example and many occupy positions of responsibility such as Subject Bronze or Guardian, the Battle Abbey equivalent of Head Boy and Girl. There are greater opportunities to have your say in Pupil Council and take a real lead in curating and managing school events, and even the direction of the school. Above all it is about empowering and supporting students.*

*Academic achievement is important and students excel in their chosen subjects here. There is also strong academic and pastoral support to monitor their progress and ensure they reach their full potential by the time the exams come. They are also helped to develop a range of strategies that will prepare them for life after the Abbey, such as a growth mind-set and resilience.*

*Battle Abbey Sixth Formers are easy to pick out for their confidence and dedication and they leave Battle Abbey as well rounded individuals. We strive to inspire our students to be compassionate leaders and global citizens who want to go on to make the World a better place.*



*Many of our former Sixth Form students come back to talk to Sixth Form groups about their experiences at University, or indeed their eventual career, and many come back to work for the school. In a world where youth culture is increasingly transient the stability and home-from-home that the Abbey provides ensures that the pupils have a stable base on which to grow.*

*I hope that this guide gives you an idea of what to expect if you join us next September and I would like to wish you well with the decisions that lie in store for you.'*

**Hannah Blake** Headteacher

# Sixth Form Student Voice



**Name** Elisabeth Duckett

**What A Level subjects are you taking?** I take Maths, Psychology and Textiles.

**Where did you start your school career (primary school)?** I joined Battle Abbey in year 9 having moved from The St Leonards Academy.

**What's the best part about being at the Abbey?** The opportunities that Battle Abbey provides are enriching and have helped me to develop as a person and open doors for my future.

**Describe Abbey life in one word:** Supportive.

**What's being a Year 13 pupil like?** As a year 13 pupil, life is very busy. However, the friendly environment and sixth form spaces helps me to balance my workload and social life.

**What do you want to go on to do?** In the future, I hope to immerse myself in a fashion focused career. Completing either an apprenticeship or fashion degree next!



**Name** Charlie Mitchell

**What A Level subjects are you taking?** Psychology, Physics and Religious Studies.

**Where did you start your school career (primary school)?** Year 5 at the Prep School.

**What's the best part about being at the Abbey?** The vast network of staff and students who encourage and support you.

**Describe Abbey life in one word:** Exciting.

**What's being a Year 13 pupil like?** Year 13 is a busy and stressful year, however I am enjoying all the opportunities that it has provided me with so far and look forward to making more memories such as at the Summer and Winter Balls.

**What do you want to go on to do?** I am hoping to go on to study Philosophy at university.



**Name** Ciaran Day

**What A Level subjects are you taking?** Computer Science, Maths, and Business Studies.

**Where did you start your school career (primary school)?** Claremont.

**What's the best part about being at the Abbey?** Although there is so many answers I could give, it's probably the fact that your surrounded by such an important piece of English history. Nothing can beat the feeling of walking in and seeing the giant painting everyday!

**Describe Abbey life in one word:** Welcoming.

**What's being a Year 13 pupil like?** Amazing! Everyone being your second family helps take the stress off the looming thought of exams. The amount of effort the teachers put in to prepare you for your exams and life after is first-class.

**What do you want to go on to do?** I want to go onto do Data Science.



**Name** Sergey Grudz

**What A Level subjects are you taking?** Maths, Further Maths, Economics and Russian.

**Where did you start your school career (primary school)?** State school in Canada.

**What's the best part about being at the Abbey?** The sense of being a part of a big family due to the scale of a school.

**Describe Abbey life in one word:** Belonging.

**What's being a Year 13 pupil like?** Challenging. It's a big jump from Year 12 in terms of workload. However, the key is to plan out your timetable wisely allowing yourself to have enough rest time.

**What do you want to go on to do?** An Economics and Mathematics degree.

# Courses on offer



## A Level Courses 2024/2025

Students usually start Year 12 with four subjects on the understanding that most will drop one of these by the October half term. Students usually continue to study three subjects with many opting to also complete an EPQ.

Each subject requires a minimum of five hours per week of independent study to complement the delivered curriculum.

Subjects currently on offer:

**Art, Biology, BTEC Business Studies, Chemistry, Classical Civilisation, Computer Science, Drama and Theatre Studies, Economics, English Literature, French, Geography, History, Maths, Further Maths, Music, Photography, BTEC Sport, Physics, Psychology, Religious Studies, Spanish, Textiles.**

**Latin (by prior agreement).**

*We can only guarantee that a course will run if sufficient numbers sign up.*

# A Level Art and Design



**Battle Abbey School has a highly successful and thriving Art Department. There are three experienced and enthusiastic teachers offering qualifications in Art: Fine Art, Art: Textiles and Art: Photography. These subjects are extremely popular with pupils, many spending extra hours in the Art Department developing their skills.**

The aim is to encourage individual and personal growth in the visual arts, to develop the perception of visual form and to co-ordinate hand and eye. Art will enhance the ability to think, perceive, make decisions and work through problems. Above all Art is a stimulating and exciting subject that often proves to be a lifelong passion. Students will learn that through hard work and experimentation they can be successful.

The success of the department can be gauged by the quality of work on display around the school and in its Art rooms. Examination results are well above the national average and most students will achieve the top grades. Sixth Form students will have extra tutoring in folder presentations to prepare for Art College interview. Students gain places at the best Art Colleges and Universities in the UK and beyond including Central St. Martins, Chelsea, Edinburgh, the Slade, Kingston, Brighton and many more. Students are currently embarking on courses in Architecture, Fashion, Fine Art, Textiles, Graphics and Fashion/Marketing.





# Art and Design: Fine art

## **Exam Board:**

A Level Art: AQA Fine Art 7202

## **Entry Requirements:**

Prospective students would normally be expected to have at least Grade 6 at GCSE Level. Students must have a special interest, aptitude and motivation for Art and Design. Students may be asked to undertake a specific drawing task to assess suitability for their chosen course.

## **Why study Art?**

The A Level Fine Art is a broad-based course that allows students the opportunity to work in a wide variety of media including sculpture, collage, pastels, acrylic, watercolour and gouache paint, mixed media as well as more traditional painting and drawing. Students are encouraged to develop their own creativity, backed by strong observation. The focus in Year 12 is on extending understanding of artists and how to respond to them in the most appropriate way, experimentation and developing technical skills.

At A Level the emphasis is on the production of sustained end products. The coursework develops, in a personal and creative way, on a theme chosen by each candidate. The coursework is supported by a related Personal Study presented in both written and visual form. The study may be historical, philosophical, technical or physiological in theme. At all times emphasis is based on developing the student's personal appreciation, creativity and investigative powers in art and design. Each student is encouraged to interpret the set projects in their own personal way. There are regular trips to galleries and museums as well as exciting workshops organised with local artists.

The A Level course culminates in an exhibition that is moderated by an external moderator. Once moderation has taken place friends and family can come and enjoy the impressive displays.





# Art and Design: Photography



## **Exam Board:**

A Level Art: AQA Photography 7206.

## **Entry Requirements:**

Prospective students would normally be expected to have at least Grade 6 at GCSE Level Art. Students must have a special interest, aptitude and motivation for Art and Design. Students may be asked to undertake a specific task to assess suitability for their chosen course.

## **Why study Photography?**

A Level Photography begins with an intensive period of technical skills development in the form of dedicated tasks and projects. This equips students with the fundamentals of photographic image production and forms the basis for creative interpretation. Students will be introduced to the historical contexts of the medium as well as a range of analogue darkroom processes and digital post-production techniques. Emphasis is placed on innovation and experimentation as well as the development of individual approaches to the medium.

The A Level provides the opportunity for sustained personal investigation of a theme chosen by the student. This is supported by a written Personal Study that will examine the subject from a critical and analytical perspective. Sustained and in depth research will lead to individual and creative outcomes that have conceptual integrity and ambition. Students will be supported to work independently to fulfil their ideas. The second component is an externally set task of 15 hours.

## **Outside the Classroom:**

There is a KS5 photography club which students can use for project enhancement or to undertake personal extra-curricular projects including darkroom work.

# Art and Design: Textiles

## Exam Board:

A Level Art: EDEXCEL Textile Design 9TEO.

## Entry Requirements:

Prospective students would normally be expected to have at least Grade 6 at GCSE Level Fine Art, Textiles or Graphics. Students must have a special interest, aptitude and motivation for Art, Design or Making.

## Why study Textiles?

Textiles is a hugely successful subject at the school, with many students having achieved A and A\* grades year on year. Previous students have gone on to study Fashion, Art Foundation, Textile Design, Fashion Communication and Fine Art at St Martins School of Art, Chelsea, Ravensbourne, Bournemouth and others. Many alumni are now working in Textile Design, Fashion, Fashion-marketing and Fashion Design or as Artists. Students have won national design competitions whilst still at the school. Students have collaborated with photography students and organized fashion shoots.

Students work in a fantastic workshop space in Martlet House allowing them the freedom to study in a peaceful Sixth Form environment near to the other new facilities on offer there. Students are allowed and encouraged to use free periods to work in the studio.

## Course Outline:

The Textile Design course at A Level runs for two years and begins with students rigorously experimenting with and learning new techniques within a given theme and framework. Students build a body of supporting studies which explore different approaches to that theme, with emphasis upon working with actual textiles techniques wherever possible. Artists and designers will be studied in a very hands-on practical, 'Let's try it!' approach. Students will need to be able to work independently, make connections between their work and the work of others and record their thoughts and findings in an exciting way as a sketchbook and/or a portfolio. These supporting studies then lead to a written essay and a body of final practical work which reaches a personal and unique conclusion for coursework. The Edexcel exam board has specified within its new syllabus that students retain the coursework element completely, whilst also sitting a final exam at the end of the course, which is part of the overall qualification.

Coursework Practical Work and Essay = 60% of overall qualification.

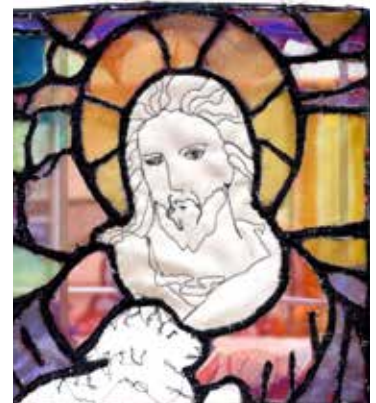
Exam Practical Work = 40% of overall qualification

Areas students may choose to focus their studies include;

- Constructed Textiles
- Fine Art Textiles
- Fashion Textiles
- Dyed Textiles
- Printed Textiles
- Textile Design

## Outside the Classroom:

- Students will visit the The Knitting and Stitching Show, the New Designers Exhibition and will experience working with visiting artists and designers.
- Students have collaborated with Business Studies students on a fashion show at the St. Leonards Kino.
- The course is followed by a fantastic exhibition of work where the work produced throughout the year is displayed within the Abbey Environment, along with a private view to which parents and friends are invited.





# Biology

## Exam Board:

AQA.

## Entry Requirements:

Grade 6 and above in GCSE Biology or Grade 7 and above in Combined Science. Maths and English: Grade 5/6.

## Why study Biology?

Biology involves the study of a wide range of exciting topics, ranging from molecular biology to the study of ecosystems, and from microorganisms to mammoths. Biology is never far from the headlines either. Vaccine research and the understanding of viruses has dominated the news and highlighted the importance of Biology, from sequencing a genome to understanding transmission of diseases and the intricate workings of the immune system.

Alongside in-depth knowledge of the biological world, students will also develop observational and analytical skills, data analysis skills and an understanding of scientific methods. Biology prepares students for a wide variety of careers in the medical professions, research, marine biology, conservation, food science and zoology, as well as valuable transferable skills for a diverse range of careers including law, business, and psychology.

The AQA specification will help nurture a passion for Biology. It gives students the opportunity to develop the practical skills needed for university combined with a wide range of interesting subject content.

## Year 1:

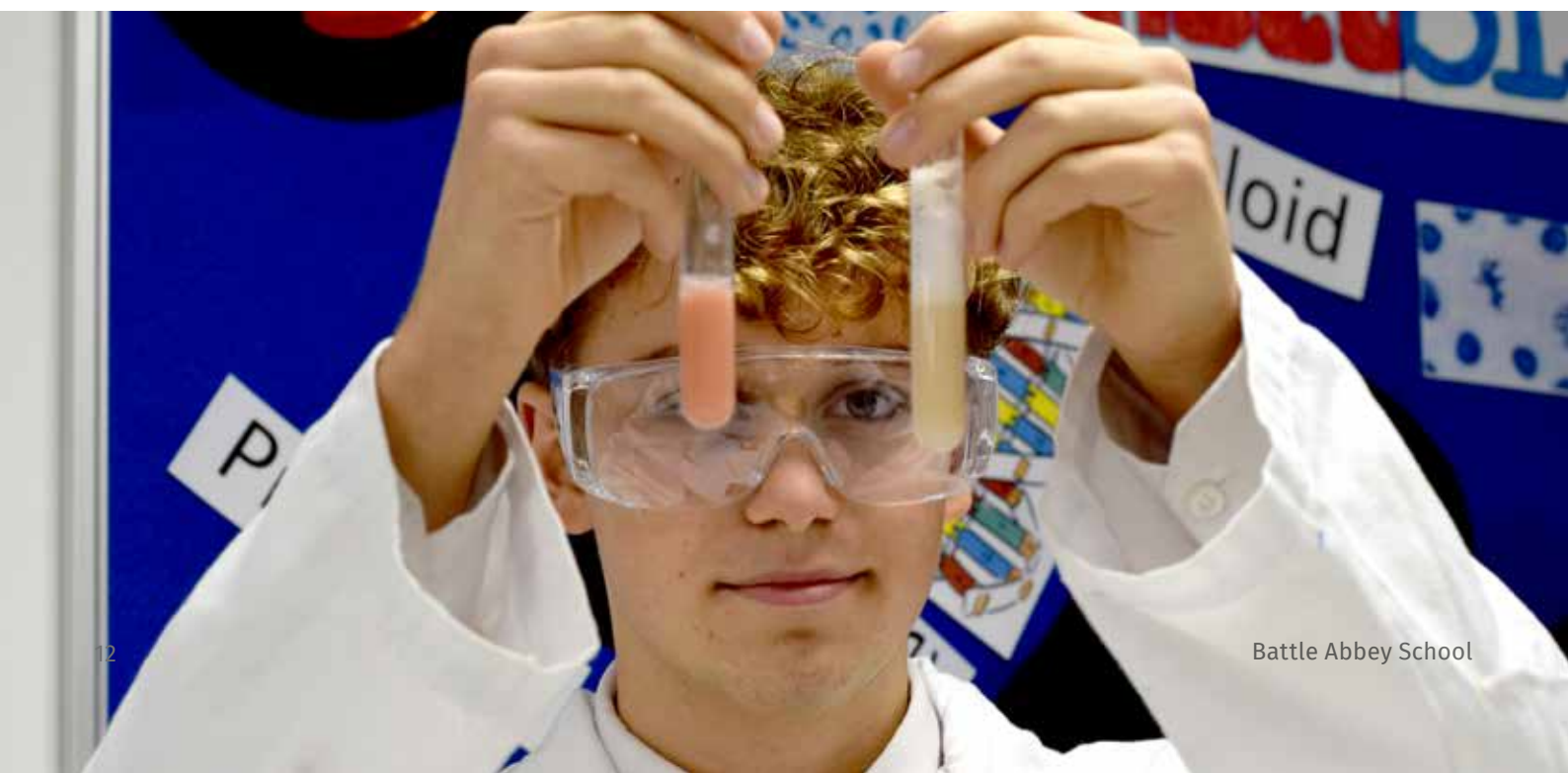
Biological Molecules  
Nucleic acids  
Cells  
Transport across cell membranes  
The immune system  
Organisms in the environment  
Mass transport  
Genes & DNA  
Genetic Diversity  
Biodiversity

## Year 2:

Photosynthesis  
Respiration  
Ecosystems  
Response to stimuli  
Nervous control and muscles  
Homeostasis  
Inherited change  
Populations and evolution  
Populations in ecosystems  
Gene expression  
Recombinant DNA technology

## Outside the Classroom:

We have plenty of opportunities for students to extend beyond the curriculum with field trips, lecture visits and local and national competitions.



# BTEC Business Studies

## **Exam Board:**

Pearson BTEC National Extended Certificate in Business - 4 Units (Equivalent to 1 A Level).

## **Entry Requirements:**

An enthusiasm for hard work and engagement in class discussion and group work; and a willingness to develop first class organisation skills.

## **What are BTEC Level 3 Qualifications?**

The BTEC qualifications were introduced in 1984 and can be studied alongside A Levels.

The BTEC Nationals in Business offer a flexible range of qualifications that can be studied alongside other level 3 qualifications such as A Levels or other BTEC Nationals as part of a larger programme of study. All qualifications attract UCAS points and are widely recognised by universities and employers.

They provide:

- Opportunities for students to showcase their skills through practical assessments
- The underpinning knowledge and skills needed to meet industry requirements
- The transferable and high-order skills so highly regarded by Higher Education and employers
- Applied General Qualification options

## **The three core units:**

Unit One: Exploring Business (internal assessment)

Unit Two: Developing a Marketing Campaign (external assessment)

Unit Three: Personal and Business Finance (external assessment)

## **Then, one optional unit:**

Unit Eight: Recruitment and Selection Process (internal assessment)

## **Course Outline:**

Year 1: 'Exploring Business' & 'Personal and Business Finance'

Year 2: 'Developing a Marketing Campaign' & 'Recruitment and Selection Process'

## **Outside the Classroom:**

Each unit includes interaction with the local business community and external speakers. Students have the opportunity to take part in national business competitions; e.g. 'Student Investor Challenge' Young Enterprise - 10X challenge' and 'Money Matters'.

## **University applications:**

The Extended Certificate can be combined with other A Levels in a university application. 95%\* of universities and colleges in the UK now accept the BTEC including Oxford University. Other universities will accept the BTEC Extended Certificate as part of a package of qualifications including another A Level and the EPQ (Extended Project Qualification).

However, it should be noted that some universities may prefer three standard A Levels but this depends on the individual application.

## **In summary:**

- Assessed continually through internal and external assignments.
- Assignments can be resubmitted to achieve a higher grade.

# Chemistry

## Exam Board:

OCR A.

## Entry Requirements:

Level 7 and above in GCSE Chemistry or Combined Science.

Maths Level 7 upwards

English Level 5 upwards

## Why study Chemistry:

Chemistry helps you to develop research, problem solving and analytical skills. It helps you to challenge ideas and shows how to work things out through logic and step-by-step reasoning. Chemistry often requires teamwork and communication skills, which is great for project management. A level Chemistry studies the material world as well as theory. Through chemistry we can describe and explain questions such as: "why does ice float on water", "how do we make plastics?", "how can we make antiseptics and aspirin" and many more. From baking a cake to recharging a mobile phone, chemistry is involved in everything we do; and our lives are inextricably influenced by many aspects of chemistry. Chemistry will continue to be at the forefront of responding to the needs of society. With chemists central to making advances in designing new materials, efficient energy use, drug development, and technology, to name but a few.

## Course Outline:

The A Level Chemistry course covers a wide variety of basic concepts such as the structure of the atom; the interaction of matter and energy; how to control reactions; patterns in the Periodic Table; understanding carbon-based molecules.

If you study Chemistry in the Sixth Form you will:

- Study intellectually challenging ideas.
- Gain an understanding of the molecular complexity of the world around us.
- Gain an insight into how and why chemical reactions happen.

You will not only work on fundamental ideas and concepts but develop a wide range of transferable skills that will last you a lifetime.

You will have opportunities to:

- Present and communicate complex ideas concisely and effectively.
- Work independently.
- Use ICT, for example by data logging, using databases and simulation software.

Skills which you will develop include:

- How to apply, analyse and evaluate knowledge and ideas.
- How to solve problems both creatively and critically.
- How to manipulate apparatus with precision and accuracy.
- How to apply skills of numeracy in problem-solving.

Success with A Level Chemistry will prepare you for a future in Chemistry, Pharmacy, Pharmacology, Chemical Engineering, Biochemistry, Biomedical Sciences, Medicine and Dentistry. Chemistry is also regarded very highly for other unrelated courses such as Law, Art and Computer Science. It is a subject that all Russell group universities love, so you cannot go wrong in taking this as an A Level option.

Outside the Classroom: We have plenty of opportunities to extend students beyond the curriculum. Such as, Cambridge chemistry challenge and the chemistry Olympiad. Also, many pupils have a chance of doing an EPQ project within Chemistry, a project of their choice is researched.



# Classical Civilisation

## Exam Board:

OCR

## Entry Requirement:

An enquiring mind ready to make connections.

## Why study Classical Civilisation?

An A level in Classical Civilisation broadens the mind. Ancient classical cultures have so much to tell us about the way we live our lives today, and its literature, history, thought and culture will enrich your understanding of other humanities subjects. The syllabus covers: art, history, literature, politics, drama, psychology, and much more. So if you've got broad interests and aren't sure which A levels to take, then perhaps Classical Civilisation is for you?

## Course Outline:

There are three components to the course:

**The World of the Hero:** You will read the *Odyssey* and the *Aeneid*, learning about their socio-political context; appreciating their literary style; understanding the importance of 'hero' stories and how those stories echo down the generations to the present day. There is one written paper of 2 hours 30 minutes. This component is worth 40% of the qualification.

**Culture & The Arts:** We will study Greeks and Barbarians reading the whole of Euripides' *Medea* (brilliant but horrifying) and Aeschylus' *Persians*, plus extracts from Herodotus' account of the Persian wars. You will visit the British Museum to view the Bassae frieze depicting the Amazons (a tribe of fabulous warrior women) and some breath-taking Persian artefacts. There is one written paper of 1 hour 45 minutes. This component is worth 30% of the qualification.

**Beliefs & Ideas:** We will study Democracy and the Athenians. The ideas and ideals, the benefits and disadvantages are just as relevant in the C21st as they were 3000 years ago. You will study Solon and Pericles, the origins of democracy, and alternative voting systems such as sortition. You will read contemporary critiques of democracy, and Aristophanes' *Assemblywomen*. There is one written paper of 1 hour 45 minutes. This component is worth 30% of the qualification.

Also ... Our A level Class Civ pupils have the opportunity to:

- learn Ancient Greek;
- participate in school trips to e.g. British Museum, Hadrian's Wall or Athens;
- help to organise our inter-school Classics tournament for prep schools;
- do a classics-based EPQ
- take part in national essay competitions
- perform in a live staged reading of the *Odyssey* or *Aeneid*

**Enquiries:** Nicky Bishop, Head of Classics, [bishopn@battleabbeysschool.com](mailto:bishopn@battleabbeysschool.com)



# Computer Science

## Exam Board:

AQA 'A' Level in Computer Science, 7517

## Entry Requirements:

In order to study Computer Science you will need to have achieved at least a grade 6 at GCSE Computer Science and/or to have shown excellent performance in Maths GCSE (grade 6+). You will also need to have demonstrated the following skills;

- The ability to work well independently
- A logical and precise way of thinking
- Creativity necessary to produce novel solutions to real computational problems
- Resilience needed to work through complex programs

You will study a wide range of topics (see below).

## Why study Computer Science?

The 'A' Level Computer Science course is designed to develop the application of skills, knowledge and understanding, especially in programming, to solve problems within a contemporary setting. The specification is designed to allow students to demonstrate knowledge of the fundamental principles of the subject and develop a thorough understanding of the hardware and software aspects of computing. Students learn in a supportive setting in which they are encouraged to develop independent learning skills and practically experiment and experience programming rather than rely wholly on theory. The whole course centres on problem-solving and students are given the confidence to look for solutions to complex and challenging scenarios.

The full 'A' level qualification has three units of work, which consist of two examinations and a project. The examination structure is like this:

In the non-exam assessment, you will be writing code. For this, you will be required to produce a program, using AQA approved programming languages. The school currently teaches Python, but if you are self-taught in C#, VB, Pascal/ Delphi or Java you will, obviously, be able to use that language if you are more proficient in it.

You should take this course if you want to study for a degree in Computer Science, Web Design, Games Design, Management, Software Engineering, Natural Sciences, Data Analysis, Mathematics, Developer and many other academic courses or take an apprenticeship route to gain experience and qualifications as a software engineer, software developer, etc.

This new course is an academically rigorous A-Level that lays the foundations for an overall understanding of computer science (and is recognised as such by leading universities). The course blends practical skills in problem solving and programming alongside underlying theories.

## Useful Links

- [AQA Website \(www.aqa.org.uk\)](http://www.aqa.org.uk)
- Various videos on you tube about 'Is computer Science for You?'







# Drama and Theatre

## Edexcel Drama and theatre

Drama and Theatre Studies is a popular and growing subject at Battle Abbey. With lessons taking place in our purpose built performing arts centre, students have access to the best technical facilities, and are guaranteed a challenging and enjoyable learning environment.

### What do I need to know or be able to do before taking this course?

Drama at GCSE grade 5 recommended but not essential. It is important that you are interested in gaining a greater understanding of how theatre and plays work and that you are keen to be involved with performances.

### What will I learn on this course?

The course demands practical, creative and communication skills. You will develop your ability to create drama and theatre, either in a performing or design role. You will also be required to write about drama and to develop your powers of analysis.

### What kind of student is this course suitable for?

You need to be curious about issues and ideas and have a creative instinct for communicating your views through drama. You may be keen on performing, writing or on the visual and technical side of theatre and wish to develop your skills in some or all of these areas. Equally you will be interested in going to the theatre to see a wide range of plays.

### Why should I do it?

Because you have enjoyed Drama up to this point and you have an interest and passion in carrying on. In fact now you have greater choice; you should be aiming to enjoy it more.

The A level specification is exciting and innovative and allows for a wider variety of texts to be studied as well as the exploration of numerous performance styles. The Eduqas specification in particular, encourages students to study a range of theatre practitioners and theatre companies and then apply this knowledge to their own performances, therefore solidifying their theoretical and practical understanding of Drama and Theatre.

### The Value of Drama and Theatre Studies within and beyond the Sixth Form.

Doing Drama and Theatre Studies does not mean you have to become an actor, director or theatre designer. What it will give you is a different learning style, learning by doing and reflection, rather than learning by rote. During the course you will have to take a lot of responsibility for the decisions and choices you make and at all times you will be working collaboratively with others.

The self-motivation required makes it ideal preparation for university life and there is not a profession in which collaborative skills are not required. It will undoubtedly develop you into a more confident, sociable, charismatic and rounded individual and provide you with skills and experiences that will last a lifetime.

Drama and Theatre Studies will push and challenge in a way that other A level subjects cannot and provide a level of enjoyment in your learning that is unparalleled.



# Economics

## **Exam Board:**

Pearson Edexcel Level 3 Advanced GCE in Economics A 9ECO.

## **Entry requirements:**

Maths GCSE Level 5, English GCSE Level 5 and ideally a humanities (Geography, History or Religious Studies) at GCSE Level 6.

*"The curious task of economics is to demonstrate to men how little they really know about what they imagine they can design."* Friedrich August von Hayek

## **Why study Economics?**

Economics is a thought-provoking subject that seeks to find answers to real world problems from the recent Euro-crisis to globalisation. It will change the way in which students view their lives and encourage analytical thinking and logical problem solving. At A Level, Economics is split into two major sections – microeconomics and macroeconomics. Macroeconomics is the study of larger economic issues such as inflation, unemployment, exchange rates and globalisation i.e. national and international issues. Microeconomics is concerned with the study of markets (such as why footballers get paid more than nurses, or why people are willing to pay for water from a supermarket when they can get the same for virtually nothing out of a tap), their failure (why people smoke even though they will probably be a burden on society) and market structure.

In summary Economics is:

- Prestigious
- Multi-disciplinary
- Academic
- Relevant
- Global
- A good grounding for those interested in Business, Commerce or Finance

Economics students at Battle Abbey School experience an interesting mix of enrichment activities designed to embed their awareness of links between the real-world and economic theory. For example, attending an annual economics conference in Central London with talks on key issues like, 'Post-Brexit: The Economic Priorities,' by the Institute of Economic Affairs. They are also encouraged to initiate and become independent learners. Students have recently established a bi-weekly Current Affairs debating society called, 'Take the Floor'. This sees each student deliver a short talk on a topic of interest (e.g. The Economics of Vegetarianism) followed by Q & A and debate. Moreover, students benefit enormously from a diverse programme of external speakers focusing on issues such as 'the ailing antibiotics market'. The class also have the option to participate in national challenges such as the 'Student Investor Challenge'. We are very proud of the success of the students within Economics, with the majority of the class going on to study an economics related degree. Recent university destinations include the London School of Economics, Bath and Exeter among many others.

# English Literature

## **Exam Board:**

AQA English Literature Specification A.

## **Entry Requirements:**

Students must have at least a 5 grade pass in English Language GCSE and a 6 in English Literature GCSE.

## **Why study English?**

The A Level course is ideal for any student who enjoys both reading books and the process of analysis; the emphasis is on critical study, delving deep into the meanings of text and exploring how a theme develops across centuries and genres. All A Level English lessons are taught as discussion groups rather than classes, which means that there are more opportunities for students to share ideas and hone their critical thinking skills. The course is rewarding and challenging. Students are encouraged to read widely and should be prepared to research texts and, occasionally, teach the lesson.

A Level Literature is a facilitating A level, providing access to degrees such as Law, as well as English Literature. Our A Level results are very strong. In 2022, for example, 44% of grades were A\*-A, with 81% at A\* - B and in 2023 33% of grades were A\*. The subject continues to be a very popular one and students often study it alongside subjects such as History, Psychology, Religious Studies, Biology and Art.

## **Course Outline:**

The A Level course is divided into three units.

### **Paper 1: Love through the Ages (40%)**

Assessment is in the form of a written exam. For this unit students study one poetry and one prose text, one of which must be written pre-1900, and one Shakespeare play. Students will also be asked to write about two unseen poems.

Currently, the texts chosen for study are Othello, The Great Gatsby and Pre-1900 love poetry. Much of the exam is open book, meaning students have access to a copy of the texts in the exam.

### **Paper 2: Texts in Shared Contexts (40%)**

The assessment for this is a written exam. Students will be studying for the 'Modern Times: Literature from 1945 to the Present Day' option.

The texts being taught are The Handmaid's Tale by Margaret Atwood, Owen Sheers' Skirrid Hill and Top Girls by Caryl Churchill. The exam is open book.

## **Coursework:**

Independent Critical Study: Texts across Time (20%)

Students will study two texts of their choosing, at least one of which must have been written pre-1900, and will produce one extended essay (2500 words) and a bibliography. This will be marked by teachers and externally moderated.

Students have some freedom in their choice of texts for this aspect of the A Level as the emphasis is on autonomous reading. A list of recommended titles is provided by the exam board but students will choose their focus and title.

## **Wider reading:**

Students will be given a list of wider reading texts to read in support of their study. Reading widely will enable them to develop an understanding of how themes and ideas are developed through time.

In the autumn or spring term students attend lectures in London which focus on the different themes of the A level. In addition, students are encouraged to attend productions of the set plays. There are many online courses available to support the students' studies as well as critical libraries such as JStor.

# Geography



## Exam Board:

Syllabus - Cambridge International A Level Geography.

## Entry requirements:

At least a 6 or 7 in Science and English.

## Why study Geography?

Today's world is an ever more complex system; the increasing connectivity of economic, political and environmental agendas necessitates the need to stand back and make balanced judgments about what is going on around us. Geography offers the opportunity to gain a sense of place on planet earth, developing a more informed evaluation of human activity within the natural environment. Topics nationally approved are integrated into real issues and studied with an open mind. Positive criticism is encouraged and students' ideas are allowed to evolve within the context of topics studied. The mission is to encourage a holistic understanding and perception of 'Earth Issues' a skill reaching far beyond the subject parameters and most relevant supporting the future destiny of our pupils and the planet.

## Course Outline:

There are four components: Core Physical, Core Human, Advanced Physical and Advanced Human. Each component is worth 25% of the whole examination and is assessed by a written examination paper.

### Paper 1 (1 hour 30 minutes)

*The Physical Core*

Hydrology and fluvial geomorphology

Atmosphere and weather

Rocks and weathering

**All questions are based upon the core physical topics.**

### Paper 2 (1 hour 30 minutes)

*The Human Core*

Population

Migration

Settlement dynamics

**All questions are based upon the core human topics.**

### Paper 3 (1 hour 30 minutes)

*Advanced Physical Geography Options*

Tropical environments

Coastal environments

Hazardous environments

Arid and semi-arid environments

**Candidates answer questions based upon the two topics studied.**

### Paper 4 (1 hour 30 minutes)

*Advanced Human Geography Options*

Production, location and change

Environmental management

Global interdependence

Economic transition

**Candidates answer questions based upon the two topics studied.**

# History



**Exam Board:** AQA.

**Entry requirements:**

Students must have at least grade 6 in History and preferably grade 6 in English Literature and Language.

**Why study History?**

History is an extremely important and well-respected academic subject which can support a student's journey on a broad range of career options but ultimately it is a very interesting subject to study. At Battle Abbey we are indeed privileged to be studying in the beautiful and atmospheric building of the former Benedictine Abbey. The site of the school has been enormously important over the last 1000 years including, of course, the famous world changing event which we refer to as the Battle of Hastings. The A Level course links with the heritage of this site by studying the Tudor period - which saw the Abbey as a working institution and also saw its demise under Henry VIII's reformation. We also study the Norman Conquest and its significance which is again grounded in our surroundings. We do understand that the areas of study are so very important to inspire interest in the subject so we also include a modern world study which looks at Germany's fate during the Weimar and Nazi periods. This gives students the opportunity to study both topics that are relevant to the school and also a chance to study a more modern period.

Academic results are strong. In the last few years the vast majority of students have achieved B grades or above with many achieving A- A\*. A good number have gone on to read History at top universities including Oxford, Exeter, Durham, York, Royal Holloway, UCL and Leeds.

**Course Outline:**

Unit 1 The Tudors: England 1485-1603.

Key topics:

- Consolidation of the Tudor Dynasty England, 1485-1547- Henry VII and Henry VIII.
- Instability and consolidation 'The Mid- Tudor Crisis' 1547-1563 Edward, Mary and Elizabeth's early reign.
- The Triumph of Elizabeth 1563-1603.

Unit 3 Historical Investigation (non-exam assessment) Medieval England- 1016-1136. Students complete an independently researched essay of 3500-4500 words on the impact of the Norman Conquest.

**Outside the classroom:**

The History Society has regular meetings, students and staff enjoy talks and discussions on historical issues and current affairs with a historical eye on them, delivered as 'Maltby lectures' to other members of the school.

As a department we are committed to academic excellence and aspiration and have been able to support our student's academic journey with visiting speakers of note including the Historian and broadcaster Marc Morris and medieval history author Kathleen Tyson.

# Languages: French and Spanish



## **Exam Board & Course title:**

AQA Advanced Level GCE French/  
Spanish (Syllabus No: 7652/7692).

## **Entry Requirement:**

Grade 6 at GCSE.

## **Why study French and/or Spanish?**

The more appropriate question is 'Why not study a language?' Languages are an invaluable skill which will give you the edge over a similar applicant without a linguistic background wishing to enter university or gain employment. Languages open doors and if you study a language you are likely to be very attractive to employers in any business sector.

Languages are also immensely rewarding. The knowledge that you can confidently talk in another language is reassuring when you travel and work, it makes you sound sophisticated! Languages also

provide the opportunity to build on key transferable skills required by top universities and employers alike, enhancing your cultural and cognitive flexibility and developing your capacity for analytical thinking. Learning how to interact with speakers of other languages means you are less likely to be stuck in one mode of thinking. It can help you to see things from a range of perspectives - making you more adaptable, creative, and insightful. The ability to operate cross-culturally is becoming just as valued by employers as straight language skills.

French and Spanish, and other modern and classical languages, are highly valued and viewed as 'facilitating subjects' by the Russell Group of universities; it is a fact that if you choose a language at A-Level, you are keeping your options open at university and beyond. A recent survey shows that about 29% of language graduates go into Business Services, and around 10% go into each of the following: Manufacturing, Sales, Banking/Finance, Community/Social Services, Transport/Communications. At Battle Abbey School we have an excellent track record of gaining top grades at A-Level.

## **Course Outline:**

### **What's assessed?**

- Aspects of French and Hispanic society.
- Artistic culture in the French and Hispanic world.
- Multiculturalism in French and Hispanic society.
- Aspects of political life in French and Hispanic society.
- Grammar.

### **How it's assessed**

- Paper 1: Listening, Reading and Writing (2 hours and 30 minutes, 50% of A-level, 100 marks).
- Paper 2: Writing (One text and one film or 2 texts from the specification) (2 hours, 20% A-Level, 80 marks).
- Exam 3: Speaking: (Individual research project on aspects of society, culture, literature, film, multiculturalism, geography).

(Oral exam: 21–23 minutes (including 5 min preparation time, 60 marks, 30% of A Level).

## **Outside the Classroom:**

Study trips or work experience abroad (students have been going to Geneva and Madrid in recent years; Participation in conversation club and individual conversation practice with native speakers).

# Latin

**Exam Board:** OCR

**Entry Requirement:** Grade 8 or 9 at GCSE Latin

## Why study Latin?

A level Latin is for those who enjoyed grappling with the trickier points of Latin grammar at GCSE, love ancient history or myths, appreciated the extraordinary craft in the Latin poetry studied at GCSE, have read and loved some of the modern novels based on the classics, or read the whole of the Aeneid for the simple pleasure of it. Latin is the mother-language of many modern languages: it provides many of the specialist words used in law, medicine and science and will improve your English vocabulary. For those doing humanities subjects, the study of Latin, its literature and history will enrich your understanding of those subjects. For students who are mainly taking maths and science subjects, an A level in Latin enriches your curriculum and stretches your brain cells.

## Course Outline

The Language and Literature components of the course are equally weighted.

**Language:** You will learn around 850+ words of vocabulary and around 30 new bits of moderately stretching grammar. There is one language paper of 1 hour 30 minutes. You will translate a prose passage from Latin into English, then either answer comprehension questions on a different passage or translate 5 straightforward sentences from English into Latin. Literature: You will study one prose text and one verse text, each of about 250 lines. The texts for examination in 2026 are:

**Prose:** extracts from Nepos, The Life of Hannibal. Hannibal was the Carthaginian general who - though sheer strategic brilliance - masterminded the worst defeats the Roman army ever suffered. And yes, he did cross the Alps with elephants!

**Verse:** extracts from Virgil, Aeneid Book 4. This is the story of Dido, the Queen of Carthage, who fell hopelessly in love with the Trojan exile Aeneas, only to be abandoned when he continued on his mission towards Rome. Before committing suicide she cursed Aeneas and all his descendants (i.e. Romans). This verse text thus provides a great prequel to the Hannibal story.

There is one Literature paper of 2 hours. You will translate, answer comprehension questions, comment on the literary style of shorter extracts, and write 2 long essays on characters or themes.

## Also ...

Our A level Latin pupils have the opportunity to: learn Ancient Greek; participate in school trips to e.g. British Museum, Hadrian's Wall or Pompeii; perform in a live staged reading of the Odyssey or Aeneid; help to organise our inter-school Classics tournament for prep schools and our Year 10 Latin translation competition; help with script-writing and production of a Latin play for younger pupils; help with teaching younger pupils; do a classics-based EPQ; take part in national essay competitions.

Enquiries: Nicky Bishop, Head of Classics, [bishopn@battleabbeyschool.com](mailto:bishopn@battleabbeyschool.com)



# Maths and Further Maths

## Exam Board:

Edexcel Mathematics and Further Mathematics.

## Entry Requirements:

A minimum of 8 at GCSE and for those who scored 9 Further Maths and the AEA are also available.

## Why study Maths / Further Maths?

The queen and servant of all science,

Mathematics is an interesting and challenging A Level which extends methods learned at GCSE.

Mathematics is fundamental to any career in Medicine, Engineering, Finance or indeed careers focused on analysis of the physical world around us.

## So why take your Mathematical skills further?

- Career Opportunities – A Level Maths is a versatile qualification, well-respected by employers and a “facilitating” subjects for entry to higher education and well-paid jobs.
- Employability Skills - The reason why so many employers highly value mathematics qualifications ... mathematics students are better at thinking logically and analytically.
- Preparation for Higher Education - For progression to many courses at university it is important to have strong mathematics skills. The resilience, drive and determination to think problems through to solution sets students up for success.
- Supporting Other Subjects - The mathematical skills you learn in A Level Mathematics are of great benefit in other A level subjects such as Physics, Chemistry, Biology, IT, Geography, Psychology, Economics and Business Studies.

## A Level Results 2022

81% A\* - B in Maths 100% A\* – A in Further Maths.

## Also

- UKMT Maths Challenge Finalists (overall 17th Nationally).
- We offer support for Oxbridge MAT, STEP and TMUA and mock interviews.
- Regular qualifiers for the British Maths Olympiad at Junior, Intermediate and Senior level.





# Music

## Exam Board:

Edexcel Music A Level.

## Entry Requirements

At least a 6 in GCSE Music, or, if not, applicants should be grade 5 in Theory and an instrument. Those without Theory must be prepared to take it in addition to the A Level course.

## Why study Music?

A Level Music is regarded as one of the hardest Sixth Form options to study, with its primary purpose being to expand young musicians' performing and composing skills, as well as broadening their general knowledge of the subject. It can be a taxing course but is undoubtedly rewarding, is hugely enjoyable and encompasses all genres of music. The idea is to give attendees a breadth of knowledge that will allow them to move into professional careers in music, music recording, composition and a huge array of related fields in the creative and musical industries.

Oxford University says *"The varied nature of the course enables students to develop highly desirable skills in areas such as self-management, creativity, data analysis, performance, teamwork, problem-solving, and communication, all of which makes them an attractive prospect for potential employers... other popular destinations for Music graduates... include broadcasting, publishing, law, politics and the Civil Service. Rather than limiting your career prospects, a music degree opens doors to a wide range of careers."*

A Level music is not simply for those who wish to move into the music industry as a performer, and successful achievement at A Level can give students access to a wide variety of career paths. Other options include; sound technician, community musician, music therapist, teacher, or private tutor, or a range of careers in the music industry, in a concert hall or music venue. This might also include work in film, TV, theatre, radio, arts administration, venue management or creative education.

A Level music provides a range of transferable skills that will provide a good foundation, whatever pathway you choose.

## Course Outline:

**COMPONENT 1** Performing – 30% of qualification

**COMPONENT 2** Composing – 30% of the qualification

**COMPONENT 3** Appraising – 40% of qualification (100 mark written examination)

## Assessment overview:

- One written paper of 2 hours, with a total of 100 marks.
- One audio CD per student, with extracts to accompany questions on the paper, will be given.
- This paper comprises two sections: A and B.

## SECTION A: Area of study and dictation (50 marks)

- Three questions related to the set works (audio and skeleton score given).
- One short melody/rhythm completion exercise.

## SECTION B: Extended response (20 + 30 marks)

- Two essay questions: essay one (20 marks) and essay two (30 marks).
- Essay one asks students to draw links from their study of the set works to the music heard as an unfamiliar extract.
- Essay two gives a choice of three questions that ask students to evaluate the musical elements, context and language of one set work. Each option will be from a different area of study.

## Difficulty Levels:

At A Level there will be an equivalence between:

- Less Difficult - work which on average is judged to correspond to Grade 6 or lower.
- Standard level - work which on average is judged to correspond to Grade 7.
- More Difficult - work which on average is judged to correspond to Grade 8 or above.

It can sometimes be useful to consult specialist instrumental or vocal tutors when dealing with repertoire for an instrument or voice with which you yourself are unfamiliar.

# BTEC Physical Education

**Exam Board:**  
Pearson BTEC.

**Entry Requirements:**  
There are no specific entry requirements but having studied PE at GCSE is an advantage.

**Why study BTEC Sport?**

BTECs are relatively new qualifications aimed at equipping young people with the necessary skills to succeed in their chosen industry. They are assessed using a combination of exams and coursework which more closely resembles higher education assessment. Additionally, BTEC courses are usually completed before the final summer exam series which enables much more accurate predictions of final results.

**Course Outline:**

Within the BTEC qualification there are two different pathways you can follow. The main course contains 4 Units and gives you the equivalent UCAS points to 1 A Level. The second option involves increasing the number of units to come away with UCAS points equivalent to 1.5 A Levels.

Units include Anatomy & Physiology, Fitness Training, Professional Development in the Sports Industry and Application of Fitness Testing.

**Outside the Classroom:**

BTEC Students represent the department at all major School events. The BTEC students also gain experience in tournament planning at our annual Battle Abbey and Webster Cups.



# Physics

**Exam Board:** OCR A

**Entry Requirements:**

Level 7 and above in GCSE Physics or level 8 in Combined Science, as well as level 7 in Maths and level 6 English.

**Why study Physics:**

Physics A Level is one of the most universally accepted qualifications for progression to university. The course content covers the basis of how things work, from the constituent parts of atoms out to the extent of the universe. Physics is essential for access to a wide range of Physics and Engineering courses or more practical courses like pilot training. It is also highly regarded for other subjects such as medicine, law, architecture, computer science, maths and economics because of the thinking skills and problem solving involved.

**Course Outline:**

This is a traditional style syllabus, which is broken down into modules of an easily accessible size.

**Key features include:**

- The integration of concepts studied with a range of practical experiments
- Regular practical work, developing skills and reliable techniques
- Evaluation of the quality and accuracy of data
- Application of key concepts to solve problems in a range of different contexts and applications.

**The Year 1 units contain the following topics:**

- Explaining Motion
- Vectors
- Newtons Laws & Momentum
- Material Properties
- Electric Circuits
- Waves & Light
- Quantum Physics

# Psychology

**Exam Board:**

AQA Psychology.

**Entry Requirements:**

A grade 6 or above in Maths, English Language and Biology.

**Why study Psychology?**

Psychology is the study of mind, behaviour and experience. It offers the opportunity to consider explanations psychologists provide in trying to understand humans and our interaction with the World.

Psychology builds on skills developed in the Sciences and Humanities and offers the opportunity to gain experience in research methods. Assessments include multiple choice, short answers and extended writing /essays as part of the linear AQA Specification.

**Course Outline:**

Paper 1: Introductory topics include: social influence, memory, attachment psychopathology.

Paper 2: Psychology in context includes approaches, biopsychology and research methods.

Paper 3: Schizophrenia, forensics and gender.



# Religious Studies

*'An unexamined life is not worth living'. Plato (attributed to Socrates) "Plato's Apology".*

## Exam Board:

OCR Religious Studies A Level (H573)

## Entry requirements:

English (Language or Literature) GCSE Grade 6 and preferably a humanities subject (History, Religious Studies and Geography) at GCSE Grade 6.

## Why study Religious Studies:

Are you interested in questioning the world around you? Are you interested in thinking about ultimate questions? If the answer is yes, then Religion, Ethics and Philosophy could be the A Level for you.

You will study a wide range of topics from Feminism to Marx; the existence of God; the nature of reality; death and the afterlife; evil and suffering; ethical theories and their application from euthanasia to business ethics and many more compelling topics.

You will develop critical thinking skills, academic essay writing, logical problem solving as well as the ability to discuss and argue competently. These skills will help you in all of your A Level courses and prepare you for University.

In Summary Religious Studies is:

- Academically rigorous
- Engaging and highly relevant in today's world
- Prestigious and sought after by universities
- Multi-Disciplinary
- An excellent grounding for a range of university courses

Religious Studies supplements many other A Levels including English Literature and Humanities as well as Science courses and Psychology.

## Course Outline

### Component 01: Philosophy of religion

Students study philosophical language and thought, and issues and questions raised by belief:

- Ancient philosophical influences
- The nature of the soul, mind and body
- Arguments about the existence or non-existence of God
- The nature and impact of religious experience
- The challenge for religious belief of the problem of evil
- Ideas about the nature of God
- Issues in religious language

### Component 02: Religion and ethics

Students explore key concepts and the works of influential thinkers, ethical theories and their application:

- Normative ethical theories (such as Utilitarianism and Natural Law)
- The application of ethical theory to two contemporary issues of importance (such as Euthanasia)
- Ethical language and thought
- Debates surrounding the significant idea of conscience
- Sexual ethics, business ethics, euthanasia and the influence on ethical thought of developments in religious belief

### Component 03: Developments in religious thought

Students study Christianity in relation to:

- Feminism; Marxism; Liberation Theology; multi-faith and multi-cultural society

# A Levels Plus

## A Levels Plus: **Extended Project Qualification**

Universities tell us that the Extended Project Qualification (EPQ) Level 3 is an excellent preparation for undergraduate study as it gives real evidence of independent, critical thinking. It is a stand-alone qualification, an extension from studies, which enthuses students by offering the opportunity for open debate and research on their own topic. Students from Year 12 can opt to take the EPQ alongside their A Level studies and will be taught skills such as effective research or time management. It is essential that students work independently, but have a supervisor and subject mentors who assesses their progress.

It focuses on:

- A solid and coherent grounding in a specialist topic.
- An ability to undertake independent and self-directed learning.
- The ability to think laterally, critically and creatively.
- Problem solving.
- Reflective learning.
- Self-management.
- The development, presentation and communication of information.
- The delivery of a presentation to an audience.

We have chosen the OCR examination board as the examining body for our students for a number of reasons and the outstanding results achieved in previous years have vindicated this decision. There are four key elements which underpin the qualification, namely: i) managing a project; ii) undertaking independent research; iii) development and realisation; iv) review, evaluation and presentation.

The EPQ is intended to bridge the skills gap between further education and higher education, something that admissions tutors at numerous universities have been keen to see happen. In certain cases, the performance of students in their chosen EPQ has been pivotal in gaining them an offer and place at the universities of their choice. Perhaps most significant of all as regards the success of the qualification, however, is that it encourages creativity, enthusiasm and in-depth study within an open and free framework. Key also to success is the systematic mentoring of each individual student with essential deadlines being set for them at less frequent intervals than for mainstream subjects. These "mentor review meetings" prove decisive in aiding the whole process over the long-term and in forming the ultimate grade at the end of the process.

Some examples of titles are:

- How has our understanding of chromosomal translocation developed, and what are the ethical issues raised?
- The 'Lend-Lease Bill' and its Utility to the Soviet Union in the Second World War.
- Is the bad reputation of the fashion industry in terms of body positivity justified?
- Testing motorcycle helmet safety.
- The 2012 Olympic Games - What were the five promises, what happened to fulfil them and evaluation of the process.
- How has female sexuality been communicated in art?
- Choreographing a Contemporary dance.
- Arranging 3 pieces of music for different genres or ensembles.
- Assessing the differences in performance between a monohull and a catamaran.
- Barbershop; The history and performance.
- Designing and creating a patchwork quilt.
- To what extent are food intolerances genetic?
- Nature's presence in the fashion industry – making a coat.

(The last of these titles is a good example of the possibility for pupils to submit an artefact as opposed to the more common essay-based dissertation.)

# A Levels Plus: Enrichment Programme

The Sixth Form at Battle Abbey is a memorable place to study and it gives students a launch pad to university and beyond.

We offer what we call an A Levels+ Programme whereby students study the normal A Level subjects then have the chance to develop a range of additional and, so-called, 'soft' skills. By the time that students leave the Abbey they will have developed their academic skills as well as their public speaking, leadership, teamwork and people skills. This combination prepares them well for the challenges that lie ahead.

The enrichment opportunities at the Abbey are enviable. Students have the chance to participate in and lead over 50 different clubs and societies and also have additional enrichment provision including the following:

- A lecture series with guest speakers
- Community service and volunteering
- Study skills and support
- Leadership
- Employability
- Wellbeing
- The opportunity to study for an EPQ
- Careers and university advice clinics
- Work experience
- Sport
- Current Affairs
- Character Education & extensive Tutorial Programme
- Peer Mentoring and Restorative Practice
- A Bespoke tutor program and a one to one mentor for Year 13

Being based in the middle of Battle Town Centre means that students have access to all the local amenities and potential employers and the school has fantastic relationships with local businesses, charities and organisations. In addition, we have developed both national and international links in order to help prepare our students for life in a fast changing globalised world.

## A Levels Plus: Societies

To further support student development we run supra-curricular activities through our Societies Programme. There are a broad range of Societies led by Sixth Form subject 'Bronzes' under the supervision of academic staff.

**Ophelia (Performance)**  
**Science**  
**Sports**

**Walter De Luci (Politics, Philosophy and Economics)**  
**Phrontisteron (Maths)**  
**Rosetta (Languages)**

**James Joyce (English)**  
**Humanities**  
**Welfare**

These Societies run activities during Societies Hour. Some of the current activities include Forensics, Rocketry, Invertebrate Diversity, Philosophy, The Battle Broadcasting Club, World Literature, Maths Olympiads and Engineering. In addition to this Societies put on a series of events such as our inaugural Science Lectures.

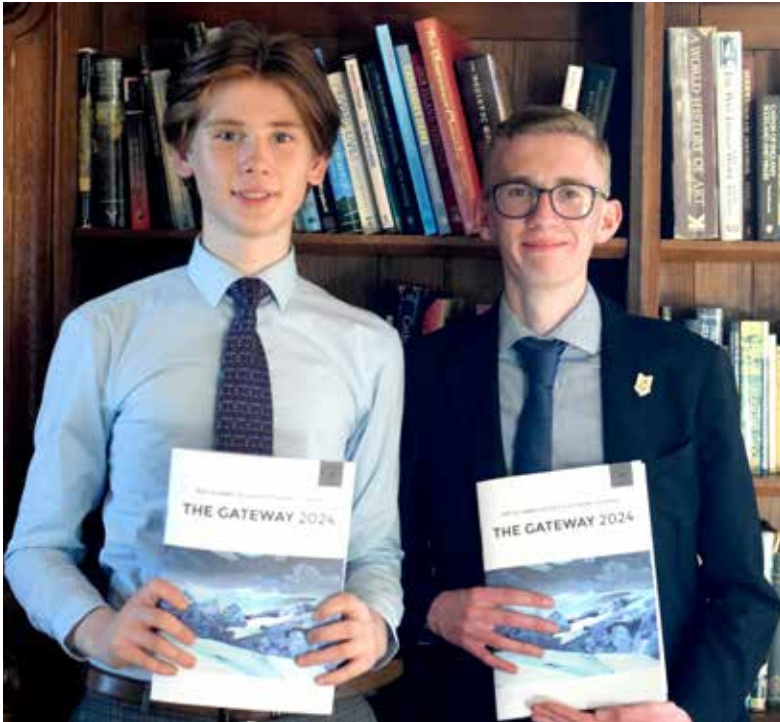
We also provide supra-curricular activities including enhanced reading lists, essay competitions, and weekly academic challenges coordinated by our Head of Supra Curricular Mr Smallman.

## A Levels Plus: Careers

All students are supported by their form tutors and subject teachers when making their Higher Education choices. The Heads of Sixth Form organise workshops and University visits and students are given individual guidance on their UCAS application and personal statements. The Careers Team arranges a programme of talks and networking events designed to give insight into a range of careers and routes into employment. Our alumni and current parents are generous with their time, sharing their knowledge and experience with the student body and individual sessions with an independent careers adviser can also be arranged through the school.

Battle Abbey School uses the on-line resource Unifrog, which offers interest based careers guidance and education for teenagers. As well as helping students identify careers that match their interests and ambitions, Unifrog has access to the full UCAS database, directs students to relevant courses and their entry requirements, and provides up to date job market data. It also has a wide range of video resources providing useful information about different careers, apprenticeships and different courses, as well as helping students write CVs, plan personal statements, and hone their interview techniques.

# A Levels Plus: The Gateway



The Gateway is an in-house, student led publication in the form of an academic journal, inviting students to contribute ideas from an array of disciplines and themes of interest that go well beyond the school curriculum, encompassing the arts, politics, economics, global issues, STEAM and current affairs.

Representatives of the school, primarily students but also staff members and in some cases parents, produce content for this academic journal. Championing student leadership, our students proudly manage the design, edit and production of the journal, making for a truly original and diverse publication.

This annual publication is professionally printed and released at a specific launch event in the summer term, again organised by The Gateway team. Last year's launch event at the Abbey saw parents, staff and governors come together to celebrate this wonderful achievement.

## A Levels Plus: Expectations

Sixth Formers are important role models at Battle Abbey. They set the standards for the student community in terms of academic commitment, conduct, discipline, courtesy and smartness. Their example is essential in maintaining the friendly, family atmosphere of which the School is so justly proud.

With a reduced timetable at A Level, the Sixth Form will have a number of periods out of class. Of these, 75% are designated as 'Study Periods' and must be used in the Library or Sixth Form Study Rooms for academic purposes. Year 12 and 13 students are not expected to attend supervised prep.

### Responsibilities

All Sixth Formers have the opportunity to be selected as 'Stars' (House Prefects) or 'Bronzes' (Senior School Prefects). The School also appoints students as 'School Guardians' (Head Boy and/or Girl), Heads of House and 'Head(s) of Boarding' each year. These positions are quite prestigious and character building and allow the Sixth Form to perform a vital function in the running of the School. Qualities of leadership, integrity and a commitment to teamwork are essential in those students chosen as they will be expected to perform a range of duties for the benefit of the entire school community.

### Dress Code

As the most senior students at Battle Abbey, the Sixth Form are required to dress smartly and professionally; a jacket must be worn at all times. Extremes of fashion with regards to hair, jewellery or make-up are unacceptable. Please refer to the sixth form dress code for further details.

### Facilities

Sixth Form students at Battle Abbey have the benefit of their own study rooms with ICT facilities and a well-furnished common room where they can make tea, coffee and toast. Additional facilities, such as fitness suite, cafe, additional study areas and a terrace are located in Martlet house.

There is a Sixth Form Christmas Dinner held as a formal dress occasion and there is also the Summer Ball; these events are organised by the School Bronzes and Guardians. Students have the opportunity to attend various trips and outings of a social, academic and vocational nature as part of their Sixth Form curriculum and enrichment programme.

### Service

All Battle Abbey Sixth Formers are expected, as part of their role as senior students to serve the school and the wider community. This could involve supporting junior lessons, leading Extra Curricular Clubs or supporting local charity and community initiatives. There will also be opportunities for our senior students to assist at our Prep School.



# Sixth Form Life a message from the Guardians



Battle Abbey Sixth Form is a friendly and welcoming community which yields a supportive network of students and staff alike, allowing pupils to thrive both academically and socially. This stage of life is key in maturing and developing into young adults, and Battle Abbey School supplies the perfect environment for this, providing students with independence and responsibility. Our Sixth Form Centre, Martlet House, is well suited to the students' needs, whether it be for independent studies in the Silent Study Room, or a chance to relax and socialise in the café, common room or spacious garden. The facilities here are almost entirely centred around the Sixth Form experience, with the area also boasting a multi-functional pool table in the common room and a well-equipped gym for students to use at their leisure.

Along with Martlet House, which is situated just over the road from the Abbey, there are also designated spaces within the main school building for Sixth Form students. These include another common room and silent study room which provides students with the liberty to choose where to spend their free time, whether it be in Martlet House, the main school or elsewhere in the town of Battle – providing they sign in and out with their lanyards.

We believe that a well-rounded education extends beyond the classroom, and our Extra-Curricular Program is a vital part of each pupil's growth. With over 50 clubs offered weekly (completely free of charge) there really is something for everyone. From competitive and social sports such as swimming, football, hockey, and volleyball, to relaxing teddy bear-making or engaging in financial trading simulation games, we cater to a wide range of interests and talents. Our music and drama departments are equally impressive, running talented choirs, multiple orchestras, and private lessons with incredibly skilled teachers. Sixth Form students regularly participate in concerts, productions, and recitals, with many performing at local events such as the Hastings Music Festival.

Additionally, our top-tier coaches provide specialized training sessions in various sports during lunch breaks, after school, and even before the school day begins, ensuring that students can continuously improve and excel. For those with a passion for academics, opportunities for intellectual growth exist in the masses. Our academic journal, *The Gateway*, provides a place to dive deeper into potential degree subjects whilst also improving and demonstrating essay-writing skills. Societies such as the Battle Broadcasting Club (BBC), Philosophy Society, and World Literature Society encourage students to broaden their knowledge and cultivate skills that will help them well beyond their school years. In Sixth Form, students are offered the opportunity to undertake leadership roles such as: Heads of House, Heads of Boarding, Bronzes (a Prefect equivalent) or Guardians - Battle Abbey's unique title for Head Boy(s) and Head Girl(s). Bridging the gap between staff and pupils, these roles encourage individuals to develop their leadership skills in a supportive and enriching environment. Providing positive change to the school community, leadership roles emphasise the student voice, enabling individuals within the school community to be listened to and recognised. With the responsibility of guiding younger years as a friendly face, the Sixth Form integrate with the whole school, immersing all pupils into the warm sense of community that Battle Abbey uniquely offers.

Responsibilities include organising the Sixth Form Balls, supporting younger years and spreading enthusiasm throughout the school for the house-based competitions. Representing the school in a variety of events, these leadership roles provide an exciting opportunity to develop communication skills across a wide age range, growing confidence in public speaking and organising events.

Battle Abbey School is a nurturing environment with a strong support system, and the wellbeing, growth and development of each individual is key. The academic staff also enable pupils to further their ability in all subjects as they are committed to providing an excellent education, with extra support sessions always being available if students are struggling.

Additionally, the chefs at Battle Abbey really are the best in the business. They always have biscuits on hand whether you need a sugar boost or are just feeling hungry! When it comes to making your time at Battle Abbey Sixth Form even more enjoyable, Annie, our Chef at Martlet House, never fails to bring joy to your day with her endless supply of sweets treats such as cakes, biscuits or cheese toasties, providing the perfect study snack. She is always introducing interesting new dishes and new cuisines and will cater for all needs.

The community at Battle Abbey School is a fantastic opportunity for students to embrace their individuality whilst still feeling a true sense of belonging. During House Time, Sixth Form students are given the chance to engage and build relationships with younger students in their house, creating a real sense of family throughout. This strong family ethos at Battle ensures that you will always be supported and that someone will always be looking out for you.

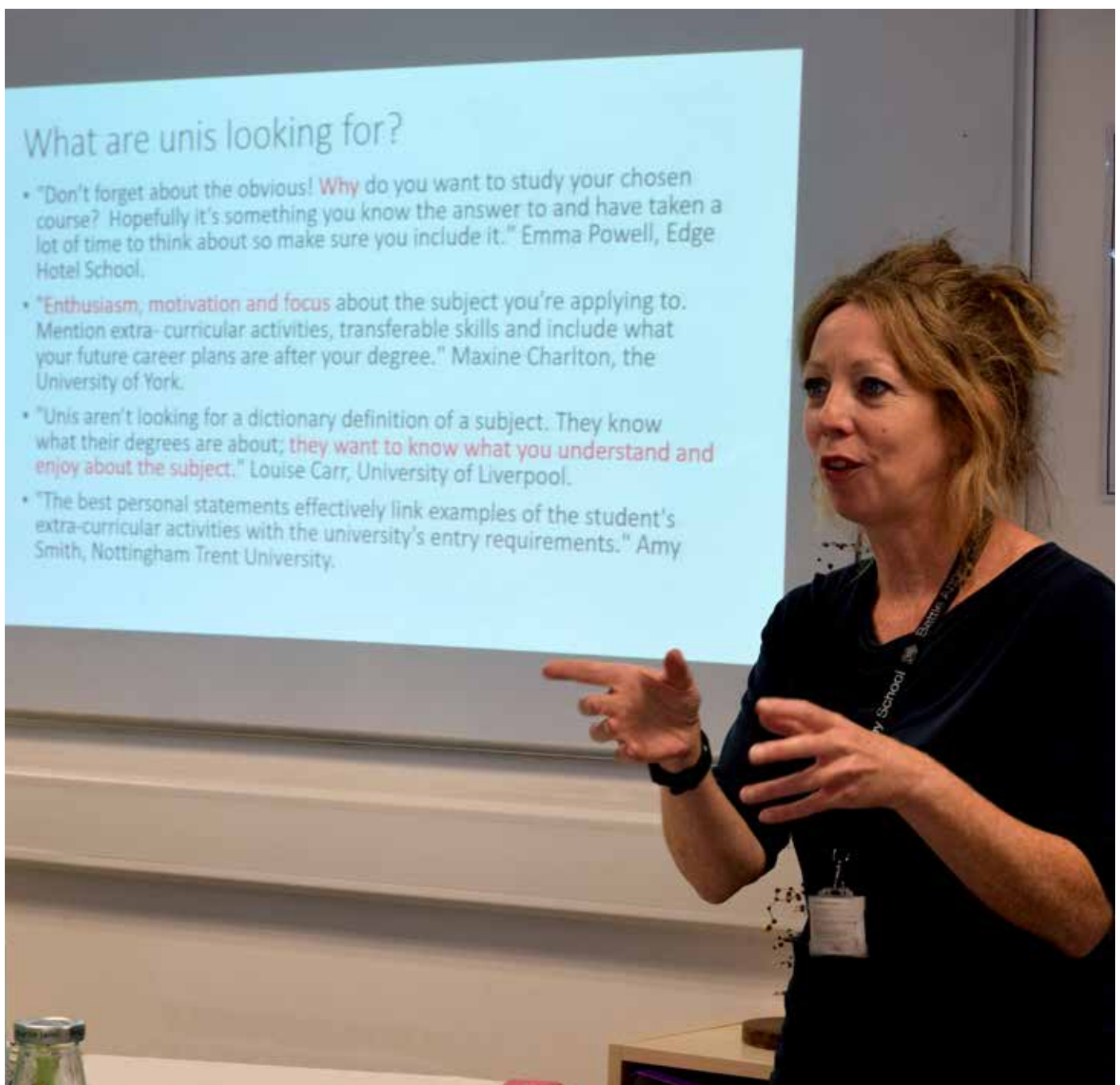
We hope to see you in the Abbey in the near future and that you will enjoy your time here as much as we have.

# UCAS Applications

Students are fully supported when it comes to deciding about what to do post BTEC and A Levels. For many, it can be a daunting prospect, taking into account the extensive range of options that are available.

Many of the teaching staff are experts in their given fields and have knowledge about what careers and degree pathways are available to students. We have a close partnership with the University of Sussex, an aspect of which involves key Sussex University staff visiting the Abbey throughout the year to talk to students and parents alike. We also take students to a UCAS convention so that they can meet representatives from most UK universities to gain an understanding of what is on offer. In addition, we invite ex Battle Abbey Students back in to talk about their experiences and offer advice.

The school uses a step by step approach when it comes to introducing pupils to the complexities of applying to university, a process which starts in the first term of Year 12. By the beginning of Year 13, students are well versed in what to do and are sending off their applications, generally three months before the national deadline. But we do understand that university is not for everyone and so we are careful to expose students to other career alternatives such as apprenticeships, taking a gap year, or perhaps studying abroad. Our careers department provide additional support and information on job opportunities through their careers bulletin.



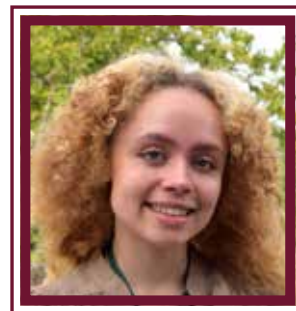
# Former Pupil profiles



**Name:** Katie  
**A Level Results:** A\* A A  
**Former School:** St. Richard's  
**Went on to:** Oxford  
**Subject:** Biological Sciences



**Name:** Ruby  
**A Level Results:** A\* A\* A\* A  
**Former School:** Christchurch Primary  
**Went on to:** Royal Conservatoire of Scotland, Glasgow  
**Subject:** Dance



**Name:** Alfie  
**A Level Results:** A\* A\* A  
**Former School:** Skippers Hill  
**Went on to:** Bath  
**Subject:** Mathematics



**Name:** Ella  
**A Level Results:** A\* A\* A\*  
**Former School:** Hailsham College  
**Went on to:** Oxford  
**Subject:** Psychology



**Name:** George  
**A Level Results:** A A B  
**Former School:** St Richard's  
**Went on to:** Cardiff University  
**Subject:** Physiotherapy



**Name:** Louis  
**A Level Results:** A\* A\* A  
**Former School:** Battle and Langton  
**Went on to:** UCL  
**Subject:** Physics



**Name:** Anna  
**A Level Results:** A\* A A  
**Former School:** Camden School for Girls  
**Went on to:** Newcastle University  
**Subject:** Marine Biology



**Name:** John  
**A Level Results:** A\* A\* A\* A  
**Former School:** Bexhill High School  
**Went on to:** Oxford  
**Subject:** Molecular and Cellular Biochemistry



**Name:** Ruby  
**A Level Results:** A\* A C D  
**Former School:** Guestling Bradshaw  
**Went on to:** Central St. Martin's  
**Subject:** Art



**Name:** Sasha  
**A Level Results:** A\* A\* B  
**Former School:** Christ Church Primary  
**Went on to:** University of the Arts London  
**Subject:** Art Foundation



# Former Pupil profiles



**Name:** Imogen  
**A Level Results:** A\* A A  
**Former School:** Battle Abbey Prep School  
**Went on to:** Cambridge  
**Subject:** Psychology



**Name:** Anita  
**A Level Results:** A\* A\* A  
**Former School:** Italy  
**Went on to:** Central St.Martin's  
**Subject:** Art



**Name:** Ed  
**A Level Results:** A\* A\* A A  
**Former School:** Sacred Heart  
**Went on to:** Bath  
**Subject:** Aerodynamic Engineering



**Name:** Jo  
**A Level Results:** A A C  
**Former School:** St. Ronan's  
**Went on to:** Camberwell School of Art  
**Subject:** Art Foundation



**Name:** Harrison  
**A Level Results:** A\* A\* A A A  
**Former School:** St Peter and St Paul's  
**Went on to:** Warwick  
**Subject:** Mathematics



**Name:** Holly  
**A Level Results:** A\* A\* A\*  
**Former School:** Claverham  
**Went on to:** Cambridge  
**Subject:** Classics



**Name:** Oliver  
**A Level Results:** A\* A\* A\*  
**Former School:** St. Ronan's  
**Went on to:** Oxford  
**Subject:** Economics and Management



**Name:** Kitty  
**A Level Results:** A\* A\* A\*  
**Former School:** Robertsbridge  
**Went on to:** Courtauld Institute  
**Subject:** Art History



**Name:** Ella  
**A Level Results:** A\* A\* A\*  
**Former School:** Robertsbridge  
**Went on to:** Cambridge  
**Subject:** Human, Social and Political Sciences



**Name:** Lois  
**A Level Results:** A\* A\* A\*  
**Former School:** Robertsbridge  
**Went on to:** Oxford  
**Subject:** Art History





BATTLE ABBEY SCHOOL

# Academic results 2024

## A Level results

35% of grades at A\* – A

62% of grades at A\*– B

85% of grades at A\*– C

98% of grades at A\* – E

---

## GCSE results

21% of all grades at 8 and 9

91% of grades at 4-9

(A\* - C equivalent)

---

## EPQ (Extended Project Qualification) Results 2024

69% of all EPQ grades were at A\*

84% of grades were A\* or A

100% of grades were A\* to B



**RECENT UNIVERSITY DESTINATIONS:** CAMBRIDGE, OXFORD, IMPERIAL, UCL, WARWICK, EXETER, LANCASTER, READING, DURHAM, SOUTHAMPTON, BATH, LEEDS, MANCHESTER, ST MARTINS, EDINBURGH, ROYAL HOLLOWAY, KINGS COLLEGE LONDON, THE ROYAL CONSERVATOIRE OF SCOTLAND AND THE COURTAULD INSTITUTE OF ART AMONG OTHERS.

**TO STUDY:** ARCHITECTURE, INTERNATIONAL RELATIONS, COSTUME AND PERFORMANCE DESIGN, LAW, ANCIENT HISTORY, ANTHROPOLOGY, CYBER SECURITY, URBAN PLANNING, PSYCHOLOGY, ECONOMICS, MIDWIFERY, AERONAUTICAL ENGINEERING, LIBERAL ARTS, NEUROSCIENCE, FRENCH & GERMAN, MARINE BIOLOGY, PHYSIOTHERAPY, ENVIRONMENTAL GEOLOGY, MEDICINE, FORENSIC SCIENCE AND ASTRO-PHYSICS AMONG OTHERS.



**be challenged,  
be ambitious,  
be you.**



**Battle Abbey School**  
Battle, East Sussex, TN33 0AD

**battleabbeyschool.com**  
info@battleabbeyschool.com